

BALLARD[®]

FINE HOMES

Avalon Place, Parksville

Lot 16 - 567 Avalon Place

Avalon Place is a beautiful new subdivision in Parksville located in the heart of it all.



Stunning 1720 sq. ft. executive rancher in Parksville's newest subdivision Avalon Place.

Beautiful new Ballard Fine Home located in Parksville's newest subdivision; Avalon Place. This spacious 1,720 sq ft rancher boasts open concept living complete with 3 bedrooms and 2 bathrooms. This home features a custom kitchen with stainless drawer boxes and granite countertops. The living room features a tray ceiling and floor-to-ceiling stone fireplace. This home also includes 7" hardwood flooring throughout, tiled laundry, bath and entry, on demand Navien gas hot water, gas furnace and heat pump with 12 year bumper-to-bumper warranty. This home is fully fenced, extensively landscaped and has Whirlpool stainless kitchen appliances. Ready to move in!

\$749,000 + GST

Marie Osmond



ballardfinehomes.com | 250-586-9077

1-546 Island Hwy W. | Parksville, B.C. | V9P 1H2

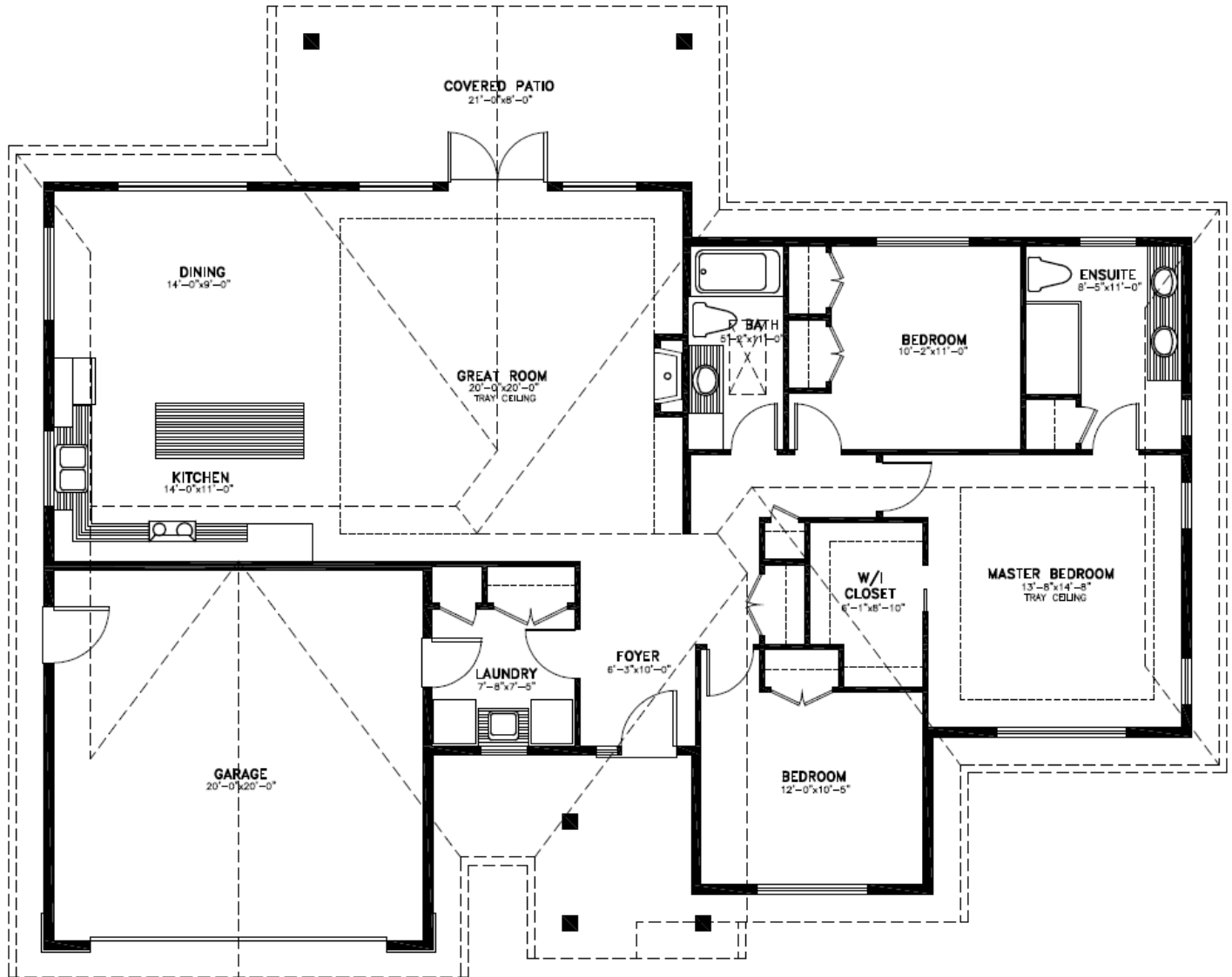
*Don Ballard started as my
Builder and now is one of my
most dearest and trusted friends...*

BALLARD®

FINE HOMES

Avalon Place, Parksville

Lot 16 - 567 Avalon Place



MAIN FLOOR PLAN

1720 SQ.FT MAIN FLOOR
PLAN NUMBER 18-011
62'-0"W x 49'-0"D

ballardfinehomes.com | 250-586-9077

1-546 Island Hwy W. | Parksville, B.C. | V9P 1H2